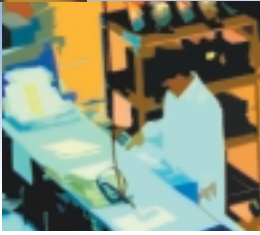


CAMtastic! 2000

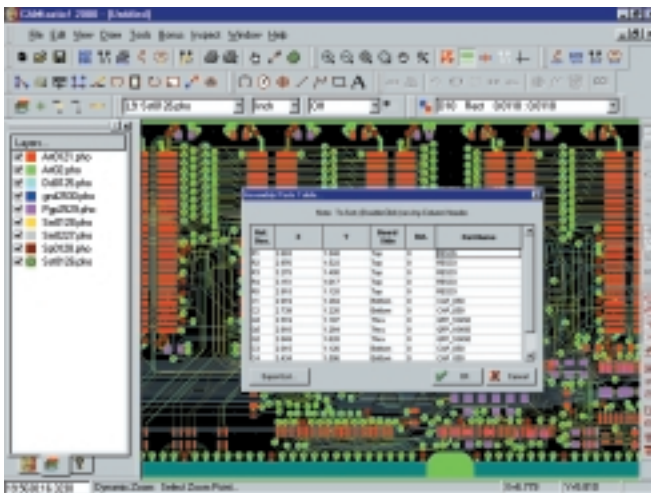
DESIGNERS' EDITION



Powerful, Fast, Easy to Use, and Intelligent... CAM Software

FREE
with every
P-CAD 2000
license

Even the best design isn't complete until it rolls off the production line. By taking control of the production process you can increase productivity, shorten design cycles and be assured of superior product quality. CAMtastic!® 2000 Designers' Edition gives you all the power, speed and ease of use you need to handle critical manufacturing information and get the job done right first-time, everytime.



CAMtastic!® 2000 Designers' Edition loads most popular CAM formats and provides all the graphical and geometrical tools you need to Edit/Modify any design. With extensive fabrication and assembly tools, CAMtastic!® 2000 Designers' Edition allows you to gracefully translate between all commonly used CAM formats. Loading, editing and outputting manufacturing data has never been easier.

CAMtastic!® 2000 Designers' Edition not only offers unsurpassed speed and ease of use - its feature-packed Print / Inspect tools with Design Rule Check allow you to eliminate the guesswork and verify critical manufacturing information without hassle. The software also delivers full information from any Gerber/HPGL/Drill and other file format, and can be used for viewing, printing, conversion, editing, analyzing and verifying your critical data. Instantly load and automatically detect all Gerber formats along with any aperture list(s) with the click of a button.

With its full compliment of viewing, inspection, editing & drawing tools, CAMtastic!® 2000 Designers' Edition represents one of the highest quality CAM tools available.

Intelligent import and export tools

CAMtastic!® 2000 Designers' Edition allows you to easily load and transfer critical design information between popular CAM formats. These include:

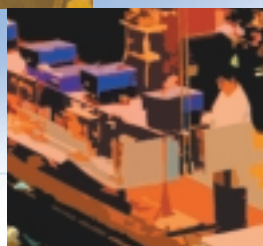
- Import CAM, Gerber, Hpgl/2, Drill, Mill/Rout, as well as AutoCAD® 14-2000 (LT) DWG/DXF, etc.
- Export CAM, Gerber, Hpgl/2, Drill, Mill/Rout, as well as AutoCAD® 14-2000 (LT) DWG/DXF, etc.
- Export Gerber data (274D, 274X, Fire9000), HPGL, Drill Data (sort, step & repeat, optimize path), CAMtastic!® database file (*.CAM), Aperture files, custom Aperture Libraries (*.LIB), and DXF (compatible with any CAD system)

Versatile editing & modification tools

Streamline data adjustment and get the job done right the first time with CAMtastic!® 2000 Designers' Edition's versatile editing and modification tools. CAMtastic!® 2000 Designers' Edition gives you all you need to manage any design, making light work of viewing, printing, converting, editing, analyzing and verifying your critical data.

- Editing Tools include Array (Step & Repeat option), Erase, Explode (Polyline, S/R blocks), Copy (single & multiple), Join, Layers (Align, Spread/Reduce, Scale), Mirror, Modify, Move, Rotate, Set Origin, Scale, and more...
- Drawing Tools include Arc, Circle (3-point, center-radius), Flash, Polyline, Polygon, Text (plus TrueType fonts), and more...
- Advanced Tools include Film Wizard (Film panelization - mirror or negative), DRC, Pad Removal (Isolated/Stacked), Teardropping, Draw to Flash & Draw to Custom Flash conversions, Polyline PRO (boundary cleaner & copper fill), Copper Area Calculation, and more...

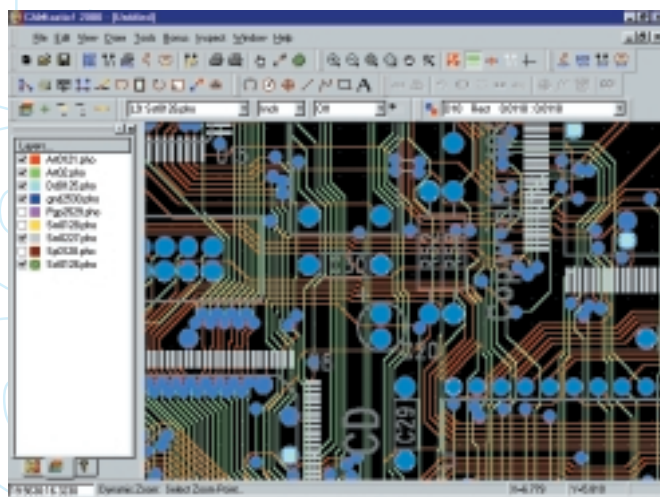
CAMtastic!



Powerful print & inspection tools

Eliminate the guesswork and verify critical manufacturing information with the CAMtastic!® 2000 Designers' Edition. Its powerful array of print and Inspection tools include:

- Complete Windows printing support
- Print Area (extents or display)
- Print Output Control (Color or Black & White)
- Print to Any Scale (fit-to-page, user-defined scaling)
- Print Options (center image on page, print page information on header)
- Print Preview
- Support for any Windows driven plotting device
- Separate page for each layer
- Group multiple images on each page
- Output detailed reports
- Measure minimum distance between objects
- Invalid polygon check
- Design Rule Check (DRC)
- Minimum airgaps (Pad->Pad, Pad->Trace, Trace->Trace) & minimum annular ring (Drill->Pad, Drill->Mask, Pad->Mask), and copper area calculation... And more!



Finally, easy-to-use PCB CAM viewing software

The CAMtastic!® 2000 Designers' Edition Viewer allows you to make the most of your relationships with any third parties involved in the design process. The viewer is freely available from www.InnovativeCAD.com and can be passed on to QA, management, testers, document control personnel, librarians, fabrication and manufacturing shops or even customers - freeing up the design flow through effective communication. Its range of features include:

- Instant loading and auto-detection of all Gerber formats (274D, 274-X, Fire9000) along with any aperture list(s) by simply "Clicking a Button."
 - Other data formats include: DXF, AutoCAD® Drawing (*.DWG) files, Excellon Drill, Excellon Mill/Route, HPGL, HPGL2, with more inputs continually added.
 - Support for filled polygons & voids, circular interpolation (true arcs), step & repeat, composites, transcoding, custom apertures & macros, translucent viewing (see-through), view differences, 10 object snaps, many zooming & navigation tools, and customizable hot-keys & tool bars.
 - Inspection features include query object (Layer, Dcode, Location, Area, Distance, etc.), measure (Point to Point), and PCB Report for easy analysis and extraction of data required for PCB sales quotations.
- Detailed reports include information such as critical dimensions (minimum trace width & gap spacing), overall PCB dimensions (size, area, perimeter length, number of cutouts), surface mount pads (minimum pad & pitch, total number), gold fingers (length, width, area), drill holes (total, number of sizes, min & max hole sizes used), vias (total, sizes, number of buried, number of blind), and much more!
 - The viewer can also calculate area for gold body & immersion boards, and allows you to create fab drawings from drill data.

System requirements

- MS Windows NT4, 95, 98, or 2000
- Pentium PC (Pentium II recommended)
- 10 MB hard disk space (30 recommended)
- SVGA display 800 X 600 resolution (1024 X 768 recommended)
- CD-ROM drive
- Mouse or compatible pointing device

For more product information visit:

www.pcad.com

Toll Free: 1-800-488-0680

Fax: 858-485-4610

E-mail: info@pcad.com

CAMtastic! 2000
DESIGNERS' EDITION

Feature Highlights

- Import: CAM, Gerber, Hpgl/2, Drill, Mill/Rout, etc.
- Import: AutoCAD® 14-2000 (LT) DWG/DXF
- Export: CAM, Gerber, Hpgl/2, Drill, Mill/Rout, etc.
- Export: AutoCAD® 14-2000 (LT) DWG/DXF
- Print & Inspection Tools
- Design Rule Check
- Edit/Modify Tools (Array, Copy, Move & Rotate, etc.)
- Drill: Create/Edit/Optimize Tools
- Manufacturing Tools (Panelize, Venting, etc.)
- Netlist Extraction

